



Key Performance Features:

- Smooth 4-Pole Performance
- Skewed and Balanced Armatures
- Encoder Ready
- Round or Optional NEMA 34 Mounting
- 12-120 VDC Available

C33

BRUSHED
SERVO
MOTOR
SERIES

Motor Characteristics

FRAME SIZE	STACK LENGTH	PEAK STALL TORQUE (T _p) OZ-IN	CONT. STALL TORQUE (T _c) OZ-IN	ROTOR INERTIA (J _m) OZ-IN-SEC ²	FRICTION TORQUE (T _f) OZ-IN	THERMAL RESISTANCE (RM) °C/WATT	MAX RECOMMEND SPEED RPM	MAX WINDING TEMP. C°	POWER RANGE W	WEIGHT LB
C33 -- 100		480	50	0.01	6	3.7	4000	155	75	4.0
C33 -- 200		850	90	0.02	7	2.9	4000	155	120	5.2
C33 -- 300		1200	130	0.025	7.5	2.3	4000	155	150	7.5
C33 -- 400		1250	172	0.04	8	1.8	4000	155	180	9.0

Sample Windings

CONSULT MAGMOTOR APPLICATION STAFF FOR OTHER AVAILABLE WINDINGS

	C33 -- 100				C33 -- 200				C33 -- 300				C33 -- 400			
	E	G	J	L	D	F	I	K	E	G	I	K	C	E	H	J
Torque Constant (Kt) oz-in/amp	6.8	10.8	21.4	34.1	9.9	16.3	31.4	50.0	18.0	28.7	45.3	72.0	15.2	24.2	48.3	76.4
Voltage Constant (Ke) Volts/Krpm	5.0	8.0	15.8	25.2	7.3	12.1	23.2	37.0	13.3	21.2	33.5	53.2	11.2	17.9	35.7	56.5
Term. Resistance (Rt) Ohms (cold)	0.4	0.95	2.9	5.8	0.4	0.85	2.8	8.0	0.73	1.4	3.8	10.0	0.5	1.0	3.5	8.6
Peak Current (A) Amps	75	48	24	15	75	48	24	15	75	48	24	15	75	48	24	15
Cont. Current (A) Amps	7.3	4.7	3.0	2.0	7.3	4.7	3.0	2.0	7.3	4.7	3.0	2.0	7.3	4.7	3.0	2.0

VALUES AS LISTED ARE TEST CONDITIONS, ACTUAL RESULTS MAY VARY

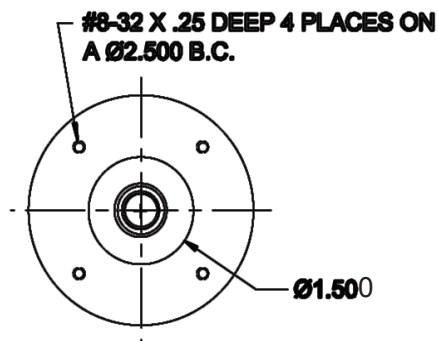
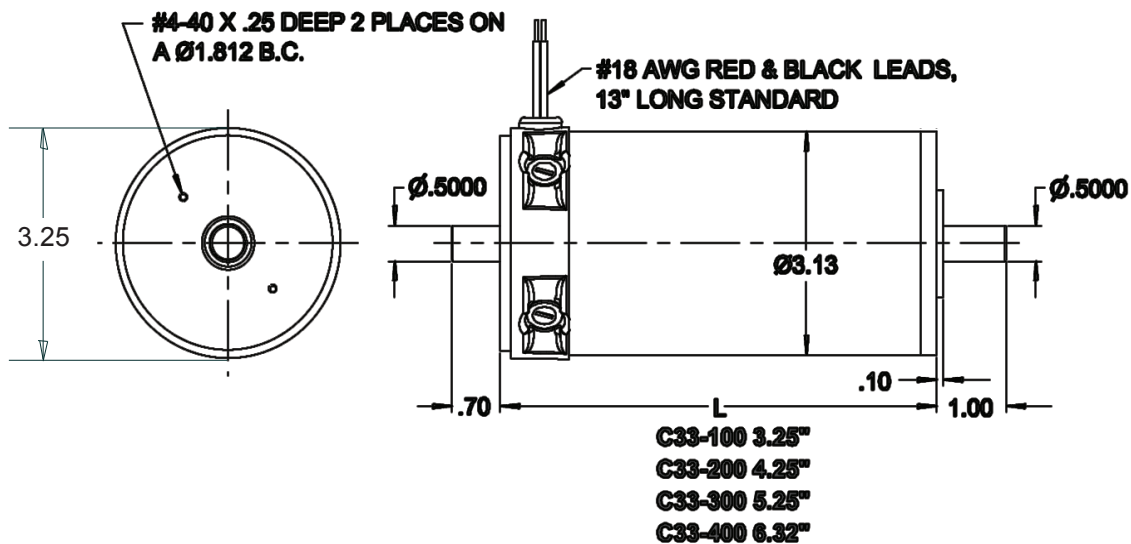
▼ C33 Series Options

- Optical Encoders
- Tachometers, Brakes and Gearbox
- Application Specific Windings and Mechanical designs
- IP65 Sealing
- For more options, see magmotor.com custom solutions, or call us.

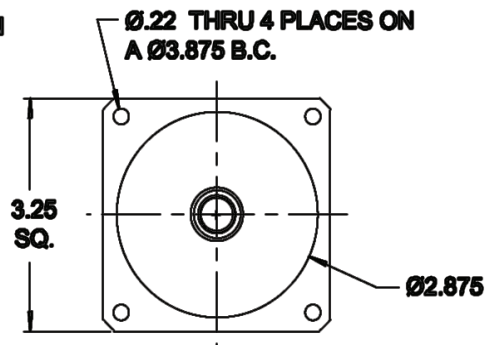
▼ Typical Applications

- Printing/Imaging Equipment
- Labeling Machines
- Automated Dispensing & insertion Machines
- Semiconductor Equipment
- Automated Assembly Machines
- Precision X-Y Positioning Machines

Magmotor™



**STANDARD
ROUND FACE MOUNT**



**NEMA 34
FLANGE MOUNT**